

---

# DSAS

---

SOLID CARBIDE DRILLS FOR HRSA MATERIALS

---



---

# DSAS

---

## APPLICATION

---

For successful drilling of HRSA materials in aerospace applications, cutting tools need to follow these important criteria:

- **Reliability**
- **Stable processing**
- **Hole quality**
- **Dimensional accuracy**

DSAS carbide drills are able to meet these requirements, and therefore able to machine high quality holes in HRSA materials such as cobalt chrome, Inconel, nickel & titanium alloys.

DSAS drills can be used successfully for drilling jet engine, gas turbine, rocket, aircraft and furnace components.



---

## FEATURES

---

### DP9020 GRADE FOR MACHINING HEAT RESISTANT ALLOYS

Tough carbide grade provides high wear and fracture resistance, resulting in extended tool life.

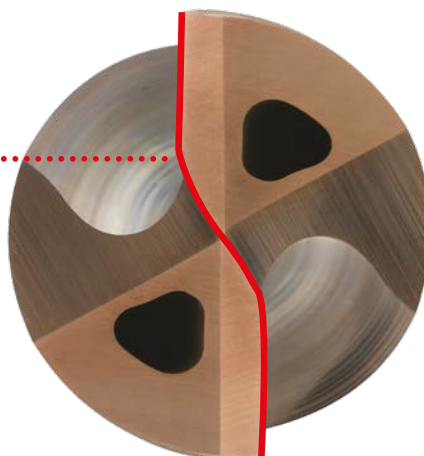


#### **SPECIAL MARGIN**

Thin margins reduce the contact area and avoids generation of work hardened layers when machining heat resistant alloys.

#### **STRAIGHT CUTTING EDGE WITH DEDICATED HONING**

The tough, straight cutting edge with a dedicated honing provides stable chip formation and prevents chipping at the cutting edge.



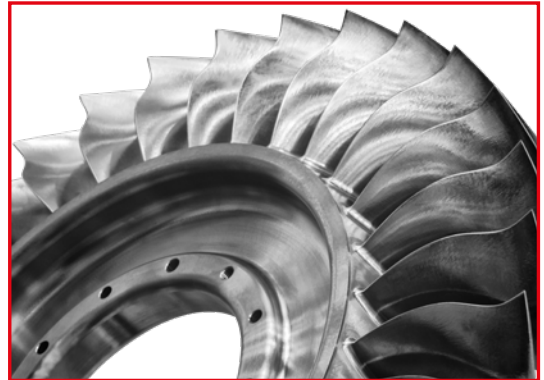
# ADVANTAGES

**CONSTANT HOLE QUALITY**


**HIGH REPEATABILITY**

**PROCESS SECURITY**

**DRILLING ACCURACY**



# PRODUCT RANGE

DRILL	DC	L / D	SHANK GEOMETRY	S	
DSAS	Ø 3 mm - 12 mm	3	DIN6535HA	©	✓

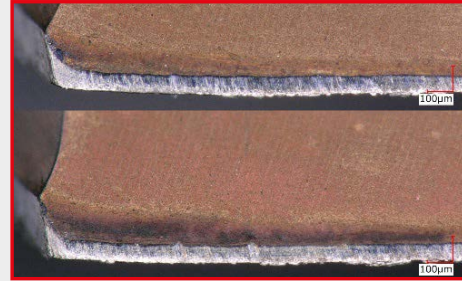
1. Inch diameters are also available.



# DSAS

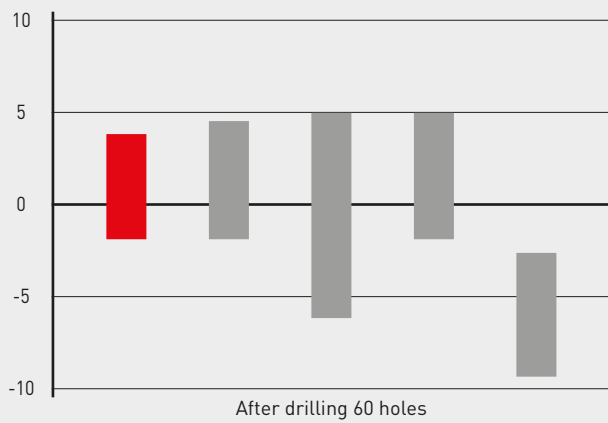
## PERFORMANCE COMPARISON

Material	Inconel 718
Tool	DSAS0700X03S080
ap (mm)	12
Vc (m/min)	15
f (mm/rev)	0.10
Coolant	Emulsion (10 %), Internal coolant
Machine	Vertical MC

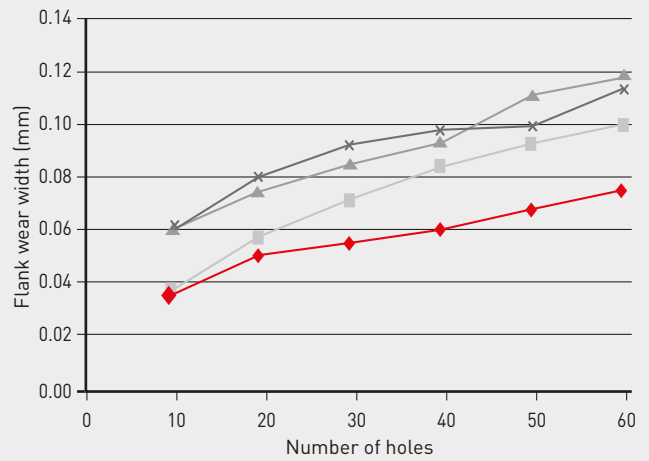


Flank wear width after drilling 60 holes

### Ø HOLE OVERSIZE (µm)

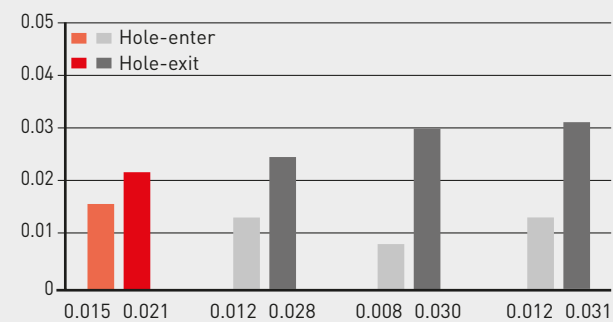


### TOOL LIFE

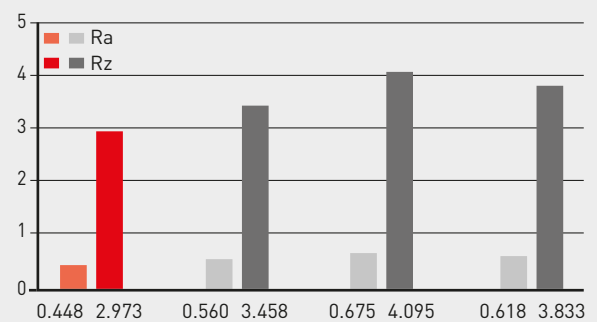


Material	Inconel 718
Tool	DSAS0700X03S080
ap (mm)	10
Vc (m/min)	15
f (mm/rev)	0.10
Coolant	Emulsion (10 %), Internal coolant
Machine	Vertical MC

### ROUNDNESS



### WALL SURFACE ROUGHNESS (µm)



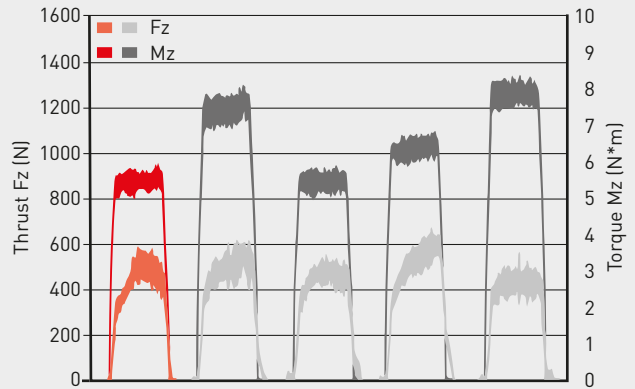
# DSAS

## CUTTING FORCE COMPARISON

### SHARP CUTTING EDGES, LOW THRUST FORCE

Due to the sharper cutting edges, the DSAS drill gave a lower thrust force when drilling titanium compared to conventional products.

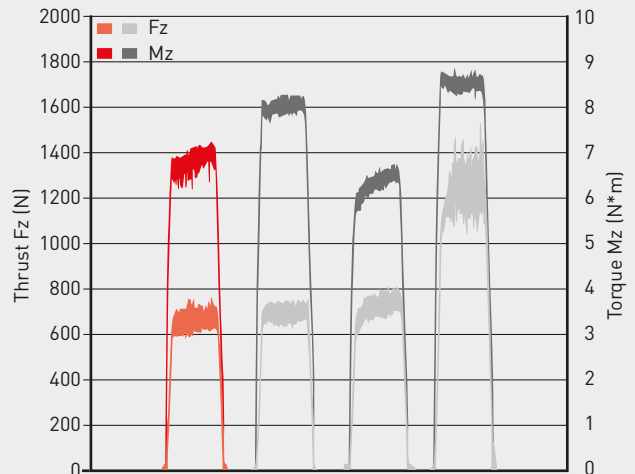
Material	Titanium alloy (Ti-6Al-4V)
Tool	DSAS0700X03S080
ap (mm)	10
Vc (m/min)	40
f (mm/rev)	0.15
Coolant	Emulsion (10 %), Internal coolant
Machine	Vertical MC



### LOW CUTTING FORCE, HIGH QUALITY

The cutting resistance companion was carried out when machining RENE 41. Compared to conventional products, DSAS maintained the lowest cutting force.

Material	RENE41
Tool	DSAS0700X03S080
ap (mm)	10
Vc (m/min)	15
f (mm/rev)	0.10
Coolant	Emulsion (10 %), Internal coolant
Machine	Vertical MC

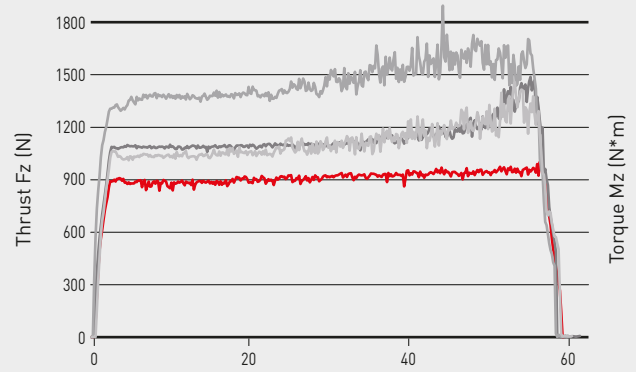




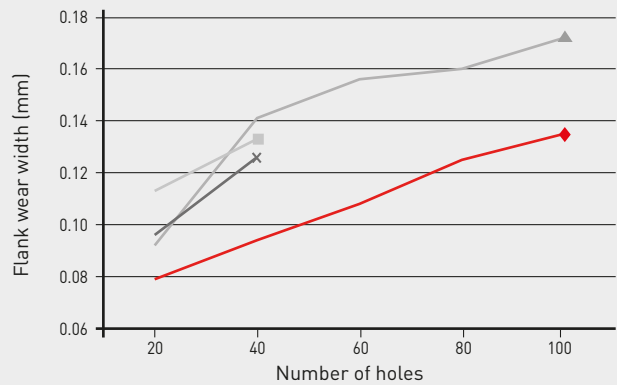
# DSAS

## CUTTING FORCE COMPARISON

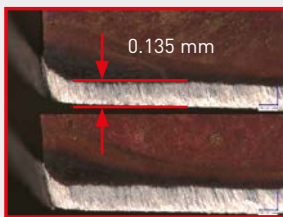
Material	Inconel 718
Tool	DSAS0600X05S060
DC (mm)	6
ap (mm)	30
Vc (m/min)	20
f (mm/rev)	0.16
Coolant	Emulsion (10 %), Internal coolant
Machine	Vertical MC



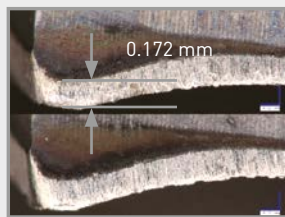
Material	Inconel 718
Tool	DSAS0600X05S060
DC (mm)	6
ap (mm)	30
Vc (m/min)	20
f (mm/rev)	0.10
Coolant	Emulsion (10 %), Internal coolant
Machine	Vertical MC



AFTER 100 HOLES



DSAS



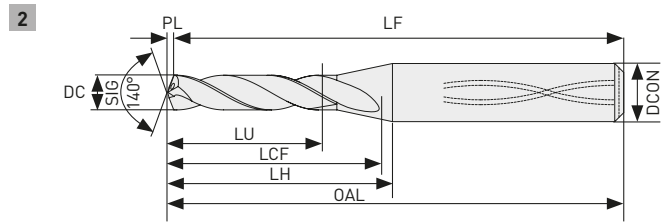
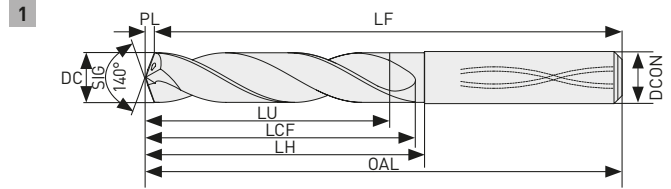
Conventional

# DSAS



## SOLID CARBIDE DRILL WITH INTERNAL COOLANT

S



DC=3	3<DC≤6	6<DC≤10	10<DC≤12
0	0	0	0
-0.018	-0.018	-0.022	-0.027



DC=3	3<DC≤6	6<DC≤10	10<DC≤12
0	0	0	0
-0.008	-0.008	-0.009	-0.011

Order number	DP9020	DC	DCON	L / D	OAL	LU	LCF	LH	LF	PL	Type
DSAS0300X03S060	●	3.00	6	3	70.5	9.5	21.5	23.5	70	0.5	1
<b>NEW</b> DSAS0300X05S060	●	3.00	6	5	78.5	15.5	28.5	31.5	78	0.5	1
DSAS0310X03S060	●	3.10	6	3	70.6	9.9	21.6	23.6	70	0.6	1
<b>NEW</b> DSAS0310X05S060	●	3.10	6	5	78.6	16.1	28.6	31.6	78	0.6	1
DSAS0318X03S060	●	3.18	6	3	70.6	10.1	21.6	23.6	70	0.6	1
<b>NEW</b> DSAS0318X05S060	●	3.18	6	5	78.6	16.5	28.6	31.6	78	0.6	1
DSAS0320X03S060	●	3.20	6	3	70.6	10.2	21.6	23.6	70	0.6	1
<b>NEW</b> DSAS0320X05S060	●	3.20	6	5	78.6	16.6	28.6	31.6	78	0.6	1
DSAS0326X03S060	●	3.26	6	3	70.6	10.4	21.6	23.6	70	0.6	1
<b>NEW</b> DSAS0326X05S060	●	3.26	6	5	78.6	16.9	28.6	31.6	78	0.6	1
DSAS0330X03S060	●	3.30	6	3	70.6	10.5	21.6	23.6	70	0.6	1
<b>NEW</b> DSAS0330X05S060	●	3.30	6	5	78.6	17.1	28.6	31.6	78	0.6	1
DSAS0340X03S060	●	3.40	6	3	70.6	10.8	21.6	23.6	70	0.6	1
<b>NEW</b> DSAS0340X05S060	●	3.40	6	5	78.6	17.6	28.6	31.6	78	0.6	1
DSAS0350X03S060	●	3.50	6	3	70.6	11.1	21.6	23.6	70	0.6	1
<b>NEW</b> DSAS0350X05S060	●	3.50	6	5	78.6	18.1	28.6	31.6	78	0.6	1
DSAS0357X03S060	●	3.57	6	3	70.7	11.4	22.7	23.7	70	0.7	1
<b>NEW</b> DSAS0357X05S060	●	3.57	6	5	78.7	18.6	30.7	31.7	78	0.7	1
DSAS0360X03S060	●	3.60	6	3	70.7	11.5	22.7	23.7	70	0.7	1
<b>NEW</b> DSAS0360X05S060	●	3.60	6	5	78.7	18.7	30.7	31.7	78	0.7	1

# DSAS

Order number	DP9020	DC	DCON	L / D	OAL	LU	LCF	LH	LF	PL	Type
DSAS0370X03S060	●	3.70	6	3	70.7	11.8	22.7	23.7	70	0.7	1
<b>NEW</b> DSAS0370X05S060	●	3.70	6	5	78.7	19.2	30.7	31.7	78	0.7	1
DSAS0380X03S060	●	3.80	6	3	70.7	12.1	22.7	23.7	70	0.7	1
<b>NEW</b> DSAS0380X05S060	●	3.80	6	5	78.7	19.7	30.7	31.7	78	0.7	1
DSAS0390X03S060	●	3.90	6	3	70.7	12.4	22.7	23.7	70	0.7	1
<b>NEW</b> DSAS0390X05S060	●	3.90	6	5	78.7	20.2	30.7	31.7	78	0.7	1
DSAS0397X03S060	●	3.97	6	3	70.7	12.6	22.7	23.7	70	0.7	1
<b>NEW</b> DSAS0397X05S060	●	3.97	6	5	78.7	20.5	30.7	31.7	78	0.7	1
DSAS0400X03S060	●	4.00	6	3	70.7	12.7	22.7	23.7	70	0.7	1
<b>NEW</b> DSAS0400X05S060	●	4.00	6	5	78.7	20.7	30.7	31.7	78	0.7	1
DSAS0410X03S060	●	4.10	6	3	73.7	13.0	24.7	26.7	73	0.7	1
<b>NEW</b> DSAS0410X05S060	●	4.10	6	5	82.7	21.2	33.7	35.7	82	0.7	1
DSAS0420X03S060	●	4.20	6	3	73.8	13.4	24.8	26.8	73	0.8	1
<b>NEW</b> DSAS0420X05S060	●	4.20	6	5	82.8	21.8	33.8	35.8	82	0.8	1
DSAS0430X03S060	●	4.30	6	3	73.8	13.7	24.8	26.8	73	0.8	1
<b>NEW</b> DSAS0430X05S060	●	4.30	6	5	82.8	22.3	33.8	35.8	82	0.8	1
DSAS0437X03S060	●	4.37	6	3	73.8	13.9	24.8	26.8	73	0.8	1
<b>NEW</b> DSAS0437X05S060	●	4.37	6	5	82.8	22.6	33.8	35.8	82	0.8	1
DSAS0440X03S060	●	4.40	6	3	73.8	14.0	24.8	26.8	73	0.8	1
<b>NEW</b> DSAS0440X05S060	●	4.40	6	5	82.8	22.8	33.8	35.8	82	0.8	1
DSAS0450X03S060	●	4.50	6	3	73.8	14.3	24.8	26.8	73	0.8	1
<b>NEW</b> DSAS0450X05S060	●	4.50	6	5	82.8	23.3	33.8	35.8	82	0.8	1
DSAS0460X03S060	●	4.60	6	3	75.8	14.6	25.8	28.8	75	0.8	1
<b>NEW</b> DSAS0460X05S060	●	4.60	6	5	85.8	23.8	35.8	38.8	85	0.8	1
DSAS0470X03S060	●	4.70	6	3	75.9	15.0	25.9	28.9	75	0.9	1
<b>NEW</b> DSAS0470X05S060	●	4.70	6	5	85.9	24.4	35.9	38.9	85	0.9	1
DSAS0476X03S060	●	4.76	6	3	75.9	15.2	25.9	28.9	75	0.9	1
<b>NEW</b> DSAS0476X05S060	●	4.76	6	5	85.9	24.7	35.9	38.9	85	0.9	1
DSAS0480X03S060	●	4.80	6	3	75.9	15.3	25.9	28.9	75	0.9	1
<b>NEW</b> DSAS0480X05S060	●	4.80	6	5	85.9	24.9	35.9	38.9	85	0.9	1
DSAS0486X03S060	●	4.86	6	3	75.9	15.5	25.9	28.9	75	0.9	1
<b>NEW</b> DSAS0486X05S060	●	4.86	6	5	85.9	25.2	35.9	38.9	85	0.9	1
DSAS0490X03S060	●	4.90	6	3	75.9	15.6	25.9	28.9	75	0.9	1
<b>NEW</b> DSAS0490X05S060	●	4.90	6	5	85.9	25.4	35.9	38.9	85	0.9	1
DSAS0500X03S060	●	5.00	6	3	81.9	15.9	28.9	29.9	81	0.9	2
<b>NEW</b> DSAS0500X05S060	●	5.00	6	5	89.9	25.9	39.9	42.9	89	0.9	2
DSAS0510X03S060	●	5.10	6	3	81.9	16.2	28.9	29.9	81	0.9	2
<b>NEW</b> DSAS0510X05S060	●	5.10	6	5	89.9	26.4	39.9	42.9	89	0.9	2
DSAS0516X03S060	●	5.16	6	3	82.0	16.5	29.0	30.0	81	1.0	2
<b>NEW</b> DSAS0516X05S060	●	5.16	6	5	90.0	26.8	40.0	43.0	89	1.0	2
DSAS0520X03S060	●	5.20	6	3	82.0	16.6	29.0	30.0	81	1.0	2
<b>NEW</b> DSAS0520X05S060	●	5.20	6	5	90.0	27.0	40.0	43.0	89	1.0	2
DSAS0530X03S060	●	5.30	6	3	82.0	16.9	29.0	30.0	81	1.0	2
<b>NEW</b> DSAS0530X05S060	●	5.30	6	5	90.0	27.5	40.0	43.0	89	1.0	2
DSAS0540X03S060	●	5.40	6	3	82.0	17.2	29.0	30.0	81	1.0	2
<b>NEW</b> DSAS0540X05S060	●	5.40	6	5	90.0	28.0	40.0	43.0	89	1.0	2
DSAS0550X03S060	●	5.50	6	3	82.0	17.5	29.0	30.0	81	1.0	2
<b>NEW</b> DSAS0550X05S060	●	5.50	6	5	90.0	28.5	40.0	43.0	89	1.0	2
DSAS0556X03S060	●	5.56	6	3	82.1	17.8	31.1	31.1	81	1.1	2
<b>NEW</b> DSAS0556X05S060	●	5.56	6	5	90.1	28.9	43.1	43.1	89	1.1	2

1. The coolant holes will be round in drills of  $\varnothing$  5 mm or less.





# DSAS

Order number	DP9020	DC	DCON	L / D	OAL	LU	LCF	LH	LF	PL	Type
DSAS0560X03S060	●	5.60	6	3	82.1	17.9	31.1	31.1	81	1.1	2
<b>NEW</b> DSAS0560X05S060	●	5.60	6	5	90.1	29.1	43.1	43.1	89	1.1	2
DSAS0570X03S060	●	5.70	6	3	82.1	18.2	31.1	31.1	81	1.1	2
<b>NEW</b> DSAS0570X05S060	●	5.70	6	5	90.1	29.6	43.1	43.1	89	1.1	2
DSAS0580X03S060	●	5.80	6	3	82.1	18.5	31.1	31.1	81	1.1	2
<b>NEW</b> DSAS0580X05S060	●	5.80	6	5	90.1	30.1	43.1	43.1	89	1.1	2
DSAS0590X03S060	●	5.90	6	3	82.1	18.8	31.1	31.1	81	1.1	2
<b>NEW</b> DSAS0590X05S060	●	5.90	6	5	90.1	30.6	43.1	43.1	89	1.1	2
DSAS0595X03S060	●	5.95	6	3	82.1	19.0	31.1	31.1	81	1.1	2
<b>NEW</b> DSAS0595X05S060	●	5.95	6	5	90.1	30.9	43.1	43.1	89	1.1	2
DSAS0600X03S060	●	6.00	6	3	82.1	19.1	31.1	31.1	81	1.1	2
<b>NEW</b> DSAS0600X05S060	●	6.00	6	5	90.1	31.1	43.1	43.1	89	1.1	2
DSAS0610X03S080	●	6.10	8	3	87.2	19.5	34.2	37.2	86	1.2	2
<b>NEW</b> DSAS0610X05S080	●	6.10	8	5	96.2	31.7	47.2	49.2	95	1.2	2
DSAS0620X03S080	●	6.20	8	3	87.2	19.8	34.2	37.2	86	1.2	2
<b>NEW</b> DSAS0620X05S080	●	6.20	8	5	96.2	32.2	47.2	49.2	95	1.2	2
DSAS0630X03S080	●	6.30	8	3	87.2	20.1	34.2	37.2	86	1.2	2
<b>NEW</b> DSAS0630X05S080	●	6.30	8	5	96.2	32.7	47.2	49.2	95	1.2	2
DSAS0635X03S080	●	6.35	8	3	87.2	20.3	34.2	37.2	86	1.2	2
<b>NEW</b> DSAS0635X05S080	●	6.35	8	5	96.2	33.0	47.2	49.2	95	1.2	2
DSAS0640X03S080	●	6.40	8	3	87.2	20.4	34.2	37.2	86	1.2	2
<b>NEW</b> DSAS0640X05S080	●	6.40	8	5	96.2	33.2	47.2	49.2	95	1.2	2
DSAS0650X03S080	●	6.50	8	3	87.2	20.7	34.2	37.2	86	1.2	2
<b>NEW</b> DSAS0650X05S080	●	6.50	8	5	96.2	33.7	47.2	49.2	95	1.2	2
DSAS0660X03S080	●	6.60	8	3	91.3	21.1	36.3	38.3	90	1.3	2
<b>NEW</b> DSAS0660X05S080	●	6.60	8	5	99.3	34.3	50.3	52.3	98	1.3	2
DSAS0670X03S080	●	6.70	8	3	91.3	21.4	36.3	38.3	90	1.3	2
<b>NEW</b> DSAS0670X05S080	●	6.70	8	5	99.3	34.8	50.3	52.3	98	1.3	2
DSAS0675X03S080	●	6.75	8	3	91.3	21.5	36.3	38.3	90	1.3	2
<b>NEW</b> DSAS0675X05S080	●	6.75	8	5	99.3	35.0	50.3	52.3	98	1.3	2
DSAS0680X03S080	●	6.80	8	3	91.3	21.7	36.3	38.3	90	1.3	2
<b>NEW</b> DSAS0680X05S080	●	6.80	8	5	99.3	35.3	50.3	52.3	98	1.3	2
DSAS0690X03S080	●	6.90	8	3	91.3	22.0	36.3	38.3	90	1.3	2
<b>NEW</b> DSAS0690X05S080	●	6.90	8	5	99.3	35.8	50.3	52.3	98	1.3	2
DSAS0695X03S080	●	6.95	8	3	91.3	22.2	36.3	38.3	90	1.3	2
<b>NEW</b> DSAS0695X05S080	●	6.95	8	5	99.3	36.1	50.3	52.3	98	1.3	2
DSAS0700X03S080	●	7.00	8	3	91.3	22.3	36.3	38.3	90	1.3	2
<b>NEW</b> DSAS0700X05S080	●	7.00	8	5	99.3	36.3	50.3	52.3	98	1.3	2
DSAS0710X03S080	●	7.10	8	3	91.4	22.7	39.4	40.4	90	1.4	2
<b>NEW</b> DSAS0710X05S080	●	7.10	8	5	104.4	36.9	54.4	57.4	103	1.4	2
DSAS0714X03S080	●	7.14	8	3	91.4	22.8	39.4	40.4	90	1.4	2
<b>NEW</b> DSAS0714X05S080	●	7.14	8	5	104.4	37.1	54.4	57.4	103	1.4	2
DSAS0720X03S080	●	7.20	8	3	91.4	23.0	39.4	40.4	90	1.4	2
<b>NEW</b> DSAS0720X05S080	●	7.20	8	5	104.4	37.4	54.4	57.4	103	1.4	2
DSAS0730X03S080	●	7.30	8	3	91.4	23.3	39.4	40.4	90	1.4	2
<b>NEW</b> DSAS0730X05S080	●	7.30	8	5	104.4	37.9	54.4	57.4	103	1.4	2
DSAS0740X03S080	●	7.40	8	3	91.4	23.6	39.4	40.4	90	1.4	2
<b>NEW</b> DSAS0740X05S080	●	7.40	8	5	104.4	38.4	54.4	57.4	103	1.4	2
DSAS0750X03S080	●	7.50	8	3	91.4	23.9	39.4	40.4	90	1.4	2

1. The coolant holes will be round in drills of  $\varnothing$  5 mm or less.

# DSAS

	Order number	DP9020	DC	DCON	L / D	OAL	LU	LCF	LH	LF	PL	Type
NEW	DSAS0750X05S080	●	7.50	8	5	104.4	38.9	54.4	57.4	103	1.4	2
	DSAS0754X03S080	●	7.54	8	3	91.5	24.1	41.5	41.5	90	1.5	2
NEW	DSAS0754X05S080	●	7.54	8	5	104.5	39.2	57.5	57.5	103	1.5	2
	DSAS0760X03S080	●	7.60	8	3	91.5	24.3	41.5	41.5	90	1.5	2
NEW	DSAS0760X05S080	●	7.60	8	5	104.5	39.5	57.5	57.5	103	1.5	2
	DSAS0770X03S080	●	7.70	8	3	91.5	24.6	41.5	41.5	90	1.5	2
NEW	DSAS0770X05S080	●	7.70	8	5	104.5	40.0	57.5	57.5	103	1.5	2
	DSAS0780X03S080	●	7.80	8	3	91.5	24.9	41.5	41.5	90	1.5	2
NEW	DSAS0780X05S080	●	7.80	8	5	104.5	40.5	57.5	57.5	103	1.5	2
	DSAS0790X03S080	●	7.90	8	3	91.5	25.2	41.5	41.5	90	1.5	2
NEW	DSAS0790X05S080	●	7.90	8	5	104.5	41.0	57.5	57.5	103	1.5	2
	DSAS0794X03S080	●	7.94	8	3	91.5	25.3	41.5	41.5	90	1.5	2
NEW	DSAS0794X05S080	●	7.94	8	5	104.5	41.2	57.5	57.5	103	1.5	2
	DSAS0800X03S080	●	8.00	8	3	91.5	25.5	41.5	41.5	90	1.5	2
NEW	DSAS0800X05S080	●	8.00	8	5	104.5	41.5	57.5	57.5	103	1.5	2
	DSAS0810X03S100	●	8.10	10	3	97.5	25.8	44.5	47.5	96	1.5	2
NEW	DSAS0810X05S100	●	8.10	10	5	114.5	42.0	61.5	63.5	113	1.5	2
	DSAS0820X03S100	●	8.20	10	3	97.5	26.1	44.5	47.5	96	1.5	2
NEW	DSAS0820X05S100	●	8.20	10	5	114.5	42.5	61.5	63.5	113	1.5	2
	DSAS0830X03S100	●	8.30	10	3	97.5	26.4	44.5	47.5	96	1.5	2
NEW	DSAS0830X05S100	●	8.30	10	5	114.5	43.0	61.5	63.5	113	1.5	2
	DSAS0833X03S100	●	8.33	10	3	97.5	26.5	44.5	47.5	96	1.5	2
NEW	DSAS0833X05S100	●	8.33	10	5	114.5	43.2	61.5	63.5	113	1.5	2
	DSAS0840X03S100	●	8.40	10	3	97.5	26.7	44.5	47.5	96	1.5	2
NEW	DSAS0840X05S100	●	8.40	10	5	114.5	43.5	61.5	63.5	113	1.5	2
	DSAS0850X03S100	●	8.50	10	3	97.5	27.0	44.5	47.5	96	1.5	2
NEW	DSAS0850X05S100	●	8.50	10	5	114.5	44.0	61.5	63.5	113	1.5	2
	DSAS0860X03S100	●	8.60	10	3	102.6	27.4	46.6	48.6	101	1.6	2
NEW	DSAS0860X05S100	●	8.60	10	5	117.6	44.6	64.6	66.6	116	1.6	2
	DSAS0870X03S100	●	8.70	10	3	102.6	27.7	46.6	48.6	101	1.6	2
NEW	DSAS0870X05S100	●	8.70	10	5	117.6	45.1	64.6	66.6	116	1.6	2
	DSAS0873X03S100	●	8.73	10	3	102.6	27.8	46.6	48.6	101	1.6	2
NEW	DSAS0873X05S100	●	8.73	10	5	117.6	45.3	64.6	66.6	116	1.6	2
	DSAS0880X03S100	●	8.80	10	3	102.6	28.0	46.6	48.6	101	1.6	2
NEW	DSAS0880X05S100	●	8.80	10	5	117.6	45.6	64.6	66.6	116	1.6	2
	DSAS0890X03S100	●	8.90	10	3	102.6	28.3	46.6	48.6	101	1.6	2
NEW	DSAS0890X05S100	●	8.90	10	5	117.6	46.1	64.6	66.6	116	1.6	2
	DSAS0900X03S100	●	9.00	10	3	102.6	28.6	46.6	48.6	101	1.6	2
NEW	DSAS0900X05S100	●	9.00	10	5	117.6	46.6	64.6	66.6	116	1.6	2
	DSAS0910X03S100	●	9.10	10	3	102.8	29.1	49.8	50.8	101	1.8	2
NEW	DSAS0910X05S100	●	9.10	10	5	122.8	47.3	68.8	71.8	121	1.8	2
	DSAS0920X03S100	●	9.20	10	3	102.8	29.4	49.8	50.8	101	1.8	2
NEW	DSAS0920X05S100	●	9.20	10	5	122.8	47.8	68.8	71.8	121	1.8	2
	DSAS0930X03S100	●	9.30	10	3	102.8	29.7	49.8	50.8	101	1.8	2
NEW	DSAS0930X05S100	●	9.30	10	5	122.8	48.3	68.8	71.8	121	1.8	2
	DSAS0940X03S100	●	9.40	10	3	102.8	30.0	49.8	50.8	101	1.8	2
NEW	DSAS0940X05S100	●	9.40	10	5	122.8	48.8	68.8	71.8	121	1.8	2
	DSAS0950X03S100	●	9.50	10	3	102.8	30.3	49.8	50.8	101	1.8	2
NEW	DSAS0950X05S100	●	9.50	10	5	122.8	49.3	68.8	71.8	121	1.8	2
	DSAS0953X03S100	●	9.53	10	3	102.8	30.4	49.8	50.8	101	1.8	2

1. The coolant holes will be round in drills of Ø 5 mm or less.



# DSAS

	Order number	DP9020	DC	DCON	L / D	OAL	LU	LCF	LH	LF	PL	Type
<b>NEW</b>	DSAS0953X05S100	●	9.53	10	5	122.8	49.4	68.8	71.8	121	1.8	2
	DSAS0960X03S100	●	9.60	10	3	102.8	30.6	49.8	50.8	101	1.8	2
<b>NEW</b>	DSAS0960X05S100	●	9.60	10	5	122.8	49.8	68.8	71.8	121	1.8	2
	DSAS0970X03S100	●	9.70	10	3	102.8	30.9	49.8	50.8	101	1.8	2
<b>NEW</b>	DSAS0970X05S100	●	9.70	10	5	122.8	50.3	68.8	71.8	121	1.8	2
	DSAS0980X03S100	●	9.80	10	3	102.8	31.2	51.8	51.8	101	1.8	2
<b>NEW</b>	DSAS0980X05S100	●	9.80	10	5	122.8	50.8	71.8	71.8	121	1.8	2
	DSAS0990X03S100	●	9.90	10	3	102.8	31.5	51.9	51.8	101	1.8	2
<b>NEW</b>	DSAS0990X05S100	●	9.90	10	5	122.8	51.3	71.8	71.8	121	1.8	2
	DSAS0992X03S100	●	9.92	10	3	102.8	31.6	51.8	51.8	101	1.8	2
<b>NEW</b>	DSAS0992X05S100	●	9.92	10	5	122.8	51.4	71.8	71.8	121	1.8	2
	DSAS1000X03S100	●	10.00	10	3	102.8	31.8	51.8	51.8	101	1.8	2
<b>NEW</b>	DSAS1000X05S100	●	10.00	10	5	122.8	51.8	71.8	71.8	121	1.8	2
	DSAS1010X03S120	●	10.10	12	3	112.9	32.2	54.9	57.9	111	1.9	2
<b>NEW</b>	DSAS1010X05S120	●	10.10	12	5	135.9	52.4	75.9	79.9	134	1.9	2
	DSAS1020X03S120	●	10.20	12	3	112.9	32.5	54.9	57.9	111	1.9	2
<b>NEW</b>	DSAS1020X05S120	●	10.20	12	5	135.9	52.9	75.9	79.9	134	1.9	2
	DSAS1030X03S120	●	10.30	12	3	112.9	32.8	54.9	57.9	111	1.9	2
<b>NEW</b>	DSAS1030X05S120	●	10.30	12	5	135.9	53.4	75.9	79.9	134	1.9	2
	DSAS1032X03S120	●	10.32	12	3	112.9	32.9	54.9	57.9	111	1.9	2
<b>NEW</b>	DSAS1032X05S120	●	10.32	12	5	135.9	53.5	75.9	79.9	134	1.9	2
	DSAS1040X03S120	●	10.40	12	3	112.9	33.1	54.9	57.9	111	1.9	2
<b>NEW</b>	DSAS1040X05S120	●	10.40	12	5	135.9	53.9	75.9	79.9	134	1.9	2
	DSAS1050X03S120	●	10.50	12	3	112.9	33.4	54.9	57.9	111	1.9	2
<b>NEW</b>	DSAS1050X05S120	●	10.50	12	5	135.9	54.4	75.9	79.9	134	1.9	2
	DSAS1060X03S120	●	10.60	12	3	112.9	33.7	54.9	57.9	111	1.9	2
<b>NEW</b>	DSAS1060X05S120	●	10.60	12	5	135.9	54.9	75.9	79.9	134	1.9	2
	DSAS1070X03S120	●	10.70	12	3	112.9	34.0	54.9	57.9	111	1.9	2
<b>NEW</b>	DSAS1070X05S120	●	10.70	12	5	135.9	55.4	75.9	79.9	134	1.9	2
	DSAS1072X03S120	●	10.72	12	3	118.0	34.1	57.0	59.0	116	2.0	2
<b>NEW</b>	DSAS1072X05S120	●	10.72	12	5	142.0	55.6	79.0	80.0	140	2.0	2
	DSAS1080X03S120	●	10.80	12	3	118.0	34.4	57.0	59.0	116	2.0	2
<b>NEW</b>	DSAS1080X05S120	●	10.80	12	5	142.0	56.0	79.0	80.0	140	2.0	2
	DSAS1090X03S120	●	10.90	12	3	118.0	34.7	57.0	59.0	116	2.0	2
<b>NEW</b>	DSAS1090X05S120	●	10.90	12	5	142.0	56.5	79.0	80.0	140	2.0	2
	DSAS1100X03S120	●	11.00	12	3	118.0	35.0	57.0	59.0	116	2.0	2
<b>NEW</b>	DSAS1100X05S120	●	11.00	12	5	142.0	57.0	79.0	80.0	140	2.0	2
	DSAS1110X03S120	●	11.10	12	3	118.1	35.4	60.1	61.1	116	2.1	2
<b>NEW</b>	DSAS1110X05S120	●	11.10	12	5	142.1	57.6	83.1	86.1	140	2.1	2
	DSAS1111X03S120	●	11.11	12	3	118.1	35.4	60.1	61.1	116	2.1	2
<b>NEW</b>	DSAS1111X05S120	●	11.11	12	5	142.1	57.7	83.1	86.1	140	2.1	2
	DSAS1120X03S120	●	11.20	12	3	118.1	35.7	60.1	61.1	116	2.1	2
<b>NEW</b>	DSAS1120X05S120	●	11.20	12	5	142.1	58.1	83.1	86.1	140	2.1	2
	DSAS1130X03S120	●	11.30	12	3	118.1	36.0	60.1	61.1	116	2.1	2
<b>NEW</b>	DSAS1130X05S120	●	11.30	12	5	142.1	58.6	83.1	86.1	140	2.1	2
	DSAS1140X03S120	●	11.40	12	3	118.1	36.3	60.1	61.1	116	2.1	2
<b>NEW</b>	DSAS1140X05S120	●	11.40	12	5	142.1	59.1	83.1	86.1	140	2.1	2
	DSAS1150X03S120	●	11.50	12	3	118.1	36.6	60.1	61.1	116	2.1	2
<b>NEW</b>	DSAS1150X05S120	●	11.50	12	5	142.1	59.6	83.1	86.1	140	2.1	2
	DSAS1151X03S120	●	11.51	12	3	118.2	36.7	62.2	62.2	116	2.2	2

1. The coolant holes will be round in drills of  $\varnothing$  5 mm or less.

# DSAS

Order number	DP9020	DC	DCON	L / D	OAL	LU	LCF	LH	LF	PL	Type
<b>NEW</b> DSAS1151X05S120	●	11.51	12	5	142.2	59.7	86.2	86.2	140	2.2	2
DSAS1160X03S120	●	11.60	12	3	118.2	37.0	62.2	62.2	116	2.2	2
<b>NEW</b> DSAS1160X05S120	●	11.60	12	5	142.2	60.2	86.2	86.2	140	2.2	2
DSAS1170X03S120	●	11.70	12	3	118.2	37.3	62.2	62.2	116	2.2	2
<b>NEW</b> DSAS1170X05S120	●	11.70	12	5	142.2	60.7	86.2	86.2	140	2.2	2
DSAS1180X03S120	●	11.80	12	3	118.2	37.6	62.2	62.2	116	2.2	2
<b>NEW</b> DSAS1180X05S120	●	11.80	12	5	142.2	61.2	86.2	86.2	140	2.2	2
DSAS1190X03S120	●	11.90	12	3	118.2	37.9	62.2	62.2	116	2.2	2
<b>NEW</b> DSAS1190X05S120	●	11.90	12	5	142.2	61.7	86.2	86.2	140	2.2	2
DSAS1200X03S120	●	12.00	12	3	118.2	38.2	62.2	62.2	116	2.2	2
<b>NEW</b> DSAS1200X05S120	●	12.00	12	5	142.2	62.2	86.2	86.2	140	2.2	2

1. The coolant holes will be round in drills of  $\varnothing$  5 mm or less.



# DSAS

## RECOMMENDED CUTTING CONDITIONS

Material	DC	L / D	Vc	n	f
Heat-resistant alloy	3	≤5	10	1000	0.06 (0.04–0.1 )
	4		10	790	0.06 (0.04–0.1 )
	5		12	760	0.08 (0.06–0.12)
	6		15	790	0.1 (0.08–0.15)
	8		15	590	0.1 (0.08–0.15)
	10		18	570	0.1 (0.08–0.15)
	12		20	530	0.12 (0.08–0.15)
Titanium alloy	3	≤5	40	4200	0.08 (0.06–0.12)
	4		40	3100	0.1 (0.08–0.16)
	5		40	2500	0.12 (0.08–0.2 )
	6		40	2100	0.14 (0.1 –0.2 )
	8		42	1600	0.18 (0.15–0.25)
	10		42	1300	0.22 (0.18–0.28)
	12		45	1100	0.24 (0.2 –0.3 )

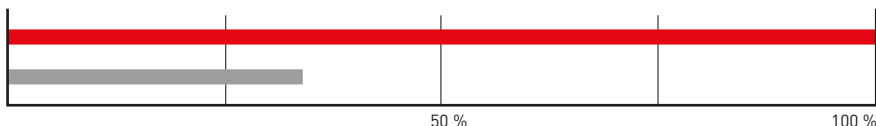
1. Through spindle high pressure coolant is recommended.
2. Emulsion coolant is recommended.
3. When using non water-soluble coolant reduce the cutting speed by 10-20 %.
4. When drilling using an external coolant system, peck / step feed drilling is recommended at every DC x 0.5 depth to promote the breaking of chips.

# APPLICATION EXAMPLES

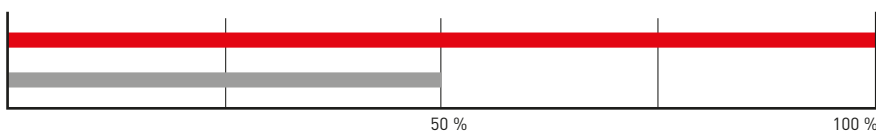
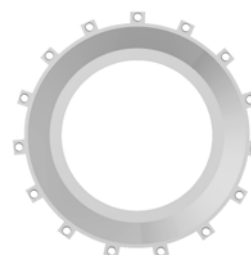
Tool	DSAS0800X03S080
Workpiece material	Jet engine casing – Inconel 718
Vc (m/min)	15
f (mm/rev)	0.10
ap (mm)	5
Coolant	Emulsion internal
Result	12 holes (continued drilling still possible)



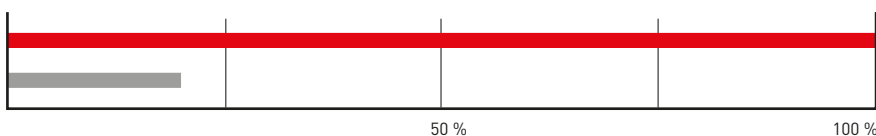
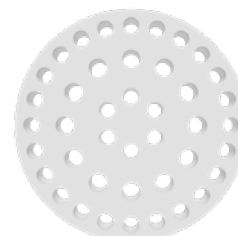
DSAS drill achieved more than 3 times longer tool life and displayed stable drilling with good hole accuracy.



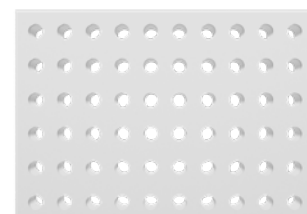
Tool	DSAS0560X03S060
Workpiece material	Inner Seal – HS188
Vc (m/min)	15
f (mm/rev)	0.035
ap (mm)	5
Coolant	Emulsion internal
Result	64 holes (further drilling still possible)



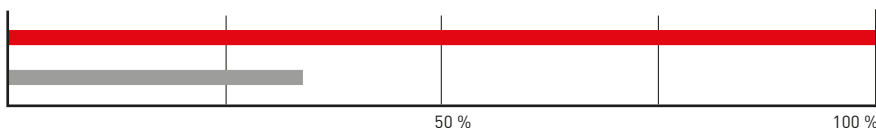
Tool	DSAS0800X03S080
Workpiece material	K-Monel
Vc (m/min)	26
f (mm/rev)	0.1
ap (mm)	32
Coolant	Emulsion internal
Result	50 holes



Tool	DSAS0580X03S060
Workpiece material	Rene41
Vc (m/min)	23.6
f (mm/rev)	0.05
ap (mm)	12
Coolant	Emulsion internal
Result	60 holes



Hole tolerance was maintained.







**GERMANY**

MMC HARTMETALL GMBH  
Comeniusstr. 2 . 40670 Meerbusch  
Phone +49 2159 91890 . Fax +49 2159 918966  
Email admin@mmchg.de

**U.K.**

MMC HARDMETAL U.K. LTD.  
Mitsubishi House . Galena Close . Tamworth . Staffs. B77 4AS  
Phone +44 1827 312312  
Email sales@mitsubishicarbide.co.uk

**SPAIN**

MITSUBISHI MATERIALS ESPAÑA, S.A.  
Calle Emperador 2 . 46136 Museros/Valencia  
Phone +34 96 1441711 . Fax +34 96 1443786  
Email comercial@mmevalencia.es

**FRANCE**

MMC METAL FRANCE S.A.R.L.  
6, Rue Jacques Monod . 91400 Orsay  
Phone +33 1 69 35 53 53 . Fax +33 1 69 35 53 50  
Email mmfsales@mmc-metal-france.fr

**POLAND**

MMC HARDMETAL POLAND SP. Z O.O  
Al. Armii Krajowej 61 . 50-541 Wrocław  
Phone +48 71335 1620 . Fax +48 71335 1621  
Email sales@mitsubishicarbide.com.pl

**RUSSIA**

MMC HARDMETAL 000 LTD.  
Electrozavodskaya St. 24 . build. 3 . Moscow . 107023  
Phone +7 495 725 58 85 . Fax +7 495 981 39 79  
Email info@mmc-carbide.ru

**ITALY**

MMC ITALIA S.R.L.  
Viale Certosa 144 . 20156 Milano  
Phone +39 0293 77031 . Fax +39 0293 589093  
Email info@mmc-italia.it

**TURKEY**

MMC HARTMETALL GMBH ALMANYA - İZMİR MERKEZ ŞUBESİ  
Adalet Mahallesi Anadolu Caddesi No: 41-1 . 15001 35530 Bayraklı /İzmir  
Phone +90 232 5015000 . Fax +90 232 5015007  
Email info@mmchg.com.tr

[www.mitsubishicarbide.com](http://www.mitsubishicarbide.com) | [www.mmc-hardmetal.com](http://www.mmc-hardmetal.com)

DISTRIBUTED BY:

□

□

L

┘

Order Code: B256E 

Published: 2022.10 (0), Printed in Germany